

The Nyheter



Volume 53 Number 12

BOTHELL SONS OF NORWAY 2-106

President's Message - December 2025

What a wonderful evening we had at our annual Turkey Dinner Meeting on Nov. 20! It was a delight to see so many of you bedecked in your Norwegian sweaters. We deeply appreciate all the generosity of time, food and funds to support the dinner and Hope Link food pantry. So many in our community have been struggling this fall with temporary loss of income and every bit helps those in need. A big thank you to Kay Schertzl and her team for buying, cooking, chopping and serving dinner. Many hands made the work lighter.



Santa Lucia. Photo: Foreign & Commonwealth Off./Wikimedia

I want to thank those who have agreed to become officers for the lodge. Your commitment is greatly appreciated. I also extend my sincere thanks to Trish Lundeen and Erik and Jeanette Elvejord for serving on the Nominating Committee. The installation of officers will happen at our Jan. 15 meeting.

Our Family Christmas Party takes place Sunday, Dec. 14, from 1 to 4 pm. Festivities feature crafts, singing, a Santa Lucia program and a surprise visitor for children of all ages. Cookies and appetizers will be available. Drop in when you can and stay as long as you are able — we look forward to celebrating with you. More details are on page 3.

A bit later in December, I want to invite all adults to attend this year's Tom and Jerry Party. I recently learned that this wonderful tradition was started by Fergus Prestbye, who passed earlier this fall. His wife, Jean, and daughters would like to honor Fergus' memory at this year's celebration. Please come and celebrate the holiday and the memory of a cherished lodge member.

I will end with this quote by Norman Vincent Peale: "I truly believe that if we keep telling the Christmas story, singing the Christmas songs, and living the Christmas spirit, we can bring joy and happiness and peace to this world."

God Jul,

Patti Blegen

Patti Blegen



Nyheter at a glance...

Hopelink Thank You;
Trustees

page 2

Social Events

page 3

Syv Slags Kaker

page 4

District 2 Scholarships;
Bazaar & Bake Sale Thanks

page 5

Lese Gruppe; Library Corner

page 6

Tom & Jerry Party; Sports
Update

page 7

Nordic Concert; Sunshine
Report; Basket Raffle

page 8

Help for Lutefisk Dinner

page 9

Norway Christmas Facts

page 10

Winners at Meeting; Bothell
Radio/Podcast Hosts;

Norway in World Cup '26

page 11

Upcoming Events

page 12

The Nyheter

SON Bothell Lodge 2-106

PO Box 492, Bothell, WA 98041 — 23905 Bothell-Everett Highway

bothellsonsofnorway.org — E-mail: editor@bothellsonsofnorway.org

Published monthly from Sept. through June (10 issues). Articles for consideration must be submitted to editor by the 21st of each month prior. Full-color version at bothellsonsofnorway.org.

No part of this publication may be reproduced without permission. Use of officer contact information is strictly prohibited and may not be used for solicitation or commercial purpose.

SON Bothell Membership — Individual (\$84/year); Family (\$144/year); Membership forms are by the Bothell Lodge front door.

2025 Lodge Officers & Trustees**Executive Board**

President	Patti Blegen	206-240-7073
Vice President	Open	
Counselor	Kay Schertzl	425-582-2211
Secretary	Trish Lundeen	425-483-5640
Membership Sec	Joan Wraalstad	206-963-8484
Treasurer	Bob Schertzl	206-619-2596
Asst. Treasurer	Jocelyn M. Rehbock	206-295-0034

Officers/Directors

Social Director	Laurie Berg	206-235-5558
Cultural Director	Laurie Berg	206-235-5558
Sports Director	Shaun Bornemeier	425-765-5185
Publicity Director	Susan Kelly	206-718-2710
Marshall	Marlis Pehling	425-488-4545
Asst. Marshall	Linda Christians	206-618-2636
Inner-Greeter	Sarah Calloway-Aksan	425-750-6409

Support Officers

Librarian	Marlis Pehling	425-488-4545
Editor	Erik Elvejord	425-501-7236
Webmaster	Martin Ng	
Sunshine	Mary Anne Rehbock	206-498-3271
Musician	Ralph Federspiel	425-444-9080
Auditors	John McTernan	425-770-4173
	Rick & Lori Arnseth	865-414-7392
Foundation Director	Linda Christians	206-618-2636
Historian	Marlys Melrose	206-819-9669
Coord. Volunteer Hours	Laurie Beach	425-736-0555
Financial Counselor	Mike Dyal	425-243-4521

Trustees

2023-25	Chris Hicks	425-672-0194
2023-25	Mike Nelson	206-498-2213
2024-26	Don Melrose	206-891-9668
2024-26	Ivar Thompson	425-736-4073
2024-26	Seth Tufteland	206-605-4112
2025-27	Elroy Christenson	206-362-5373
2025-27	Heidi Wiggins	206-330-9178

District 2 Information sonsofnorwayd2.org
Trollhaugen Lodge trollhaugensofn.com

Thank You for Your Generosity

For our November

lodge meeting,
several members

gathered to enjoy

a turkey dinner and support those in need in our community. Food and cash donations were provided to Hopelink, a local service organization and food bank. In addition, all proceeds from dinner were donated.

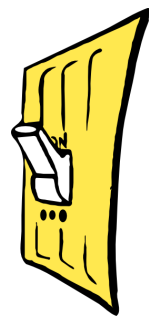
hopelink

This was Bothell Lodge's big fundraiser of the year to help members of our community. As you know, food costs and living expenses are up this year for everyone, so everyone's help was greatly appreciated. In January, we'll have a full accounting of how many pounds of food and total donations were given to Hopelink. Thank you.

Trustee Corner by Mike Nelson

For the month of November, Chris Hicks served as the trustee of the month. In December it will be Elroy Christenson.

Our trustee of the month checks the lodge inside and out at least once a week during the month. He or she looks for possible problems, water leaks, lights left on, and doors or windows left open. They also make sure the heat is turned down.



Thank you to all our trustees. If you are interested in becoming a trustee for next year and beyond, please contact me at 206-498-2213.



Social & Cultural Happenings for the Holiday Season



Dec. 6

Lutefisk and Meatball Dinner

11:30 a.m./1:00 p.m./2:30 p.m./4:00 p.m./5:00 p.m.

Seating Times are Waitlisted

Lutefisk and Meatball Dinner is

SOLD OUT but we still need help for the event.

To help, e-mail Chris Hicks at

ChrisD2SofN@outlook.com or call 425-672-0194.

Dec. 13

Swedish Pancake Breakfast — At Normanna Lodge in Everett

8:00 a.m. – 11:00 a.m.

You get Swedish pancakes, strawberries or syrup, and ham. Coffee, tea or milk to drink. Cost is \$10 per person. Cash, checks and cards accepted. No reservations required and everyone is welcome. Just drive-thru, pick-up or dine-in.



Dec. 14

Family Christmas Party

1:00 – 4:00 p.m.

Come join us at the Bothell Lodge for lots of family fun. Please bring hearty snacks to share along with your favorite cookies. Decorate cookies, make simple Christmas crafts and enjoy the afternoon.



Crafts at 1:00 p.m. Santa will arrive at 1:30 p.m. Plenty of opportunities for photos. St. Lucia program at 2:30 p.m. Social time following program.

Dec. 14

Family Christmas Party continued

To plan our numbers, please RSVP with your name, phone number and how many will attend to dinner@bothellsonsofnorway.org. Or leave a message at 425-485-9085.



Dec. 18

WE WILL NOT HAVE A LODGE MEETING ON DEC 18.

Dec. 19

Tom and Jerry Party (adults 21+)

7:00 – 9:00 p.m.

Hosted in the Bothell Lodge Main Hall, a cozy fire will be burning on the big screen and Scandinavian music will play. Homemade Tom and Jerrys and Hot Buttered Rums will be served along with appetizers.



Feel free to bring something to share. Wear your favorite holiday sweater/shirt. A \$5 donation is suggested. Please let us know if you

will be attending by making a reservation at dinner@bothellsonsofnorway.org or leave a message at 425-485-9085.

Mark your calendar for a Lefse Class on Feb. 21, 2026.

"God Jul — Merry Christmas"

"Stay Safe and Healthy."

— Laurie Berg, Social & Cultural Director

What are Your Seven Types?

This may be a controversial topic, but let's discuss the "syv/sju slags kaker" (seven types of cookies) for Christmas. In Norway there is a tradition of baking seven different types of cookies for Christmas. Seven became the number over time because it was considered lucky and was a sign of a family's status in the 19th century.

The exact type of cookies each person includes is very personal and typically follows recipes passed down for generations. Variety is important.

Many surveys on the topic have been published over the years. In "[What are your Sju Slag?](#)" by Jana Velo (2022), the Sons of Norway blog noted several surveys with many different cookies mentioned. The cumulative top seven cookies were:

1. Sandkaker/Sandbakkelse
2. Fattigman
3. Goro
4. Sirupsnipper
5. Berlinerkranser
6. Krumkaker
7. Smultringer



Krumkaker being rolled. Photo: Art Anderson/Wikimedia.



Sandbakkelse (Sandkaker) are a top favorite for Norwegians during the holidays. Photo: Jeff the quiet/Wikimedia.

Serinakaker, pepperkaker, kransekaker, kokosmakroner and hjortetakk made the top 12. A famous 1992 survey by Norwegian newspaper Aftenposten in 1992 came up with the same top seven but combined smultringer and hjortetakk, since they are similar.

Sons of Norway members had a slightly different view of their favorite Norwegian cookies, placing berlinerkranser at number eight and including rosetter in the top seven. Survey results can be viewed [here](#).

Whatever your favorite cookies are, enjoy them with family and friends. Happy Holidays.

A Trio of Scholarships are Available from District 2

Note the Deadlines

District 2 has three scholarship opportunities available for campers and all members interested in Norwegian culture and studies. Each is listed below with requirements and in order of deadlines.

To access application forms and instructions, visit www.sonsofnorway2.com/scholarships.

Carl M. Saltveit Scholarship Fund – Deadline Jan. 15, 2026

The Carl M. Saltveit Scholarship Fund provides funds for tuition, room and board to applicants that are attending the University of Oslo International Summer School in Norway. The school attracts students worldwide and offers college level courses in Norwegian history, politics, culture and language. Only District 2 members, children or grandchildren are eligible. For more information about the school, please go to www.uio.no/english/studies/summerschool.

Sofie Olson Memorial Scholarship Fund – Deadline April 15, 2026

The Sofie Olson Memorial Scholarship Fund was created in 1995 from donations contributed after the untimely deaths of two women who gave much of their time and talent to District 2. The fund provides scholarships to the children, grandchildren, nieces, and nephews of current District Two members of Sons of Norway to attend Camp Nidaros, Normanna and Trollhaugen youth camps.

Draxten Memorial Fund for Heritage and Cultural Camps

The Draxten Fund was a gift by will in 1998 from Nina Draxten, the daughter of the original founder and first president of Sons of Norway, Bersvend Draxten. She wanted children to have a chance to learn about their Norwegian heritage and culture. Each year the Sons of Norway Foundation awards approximately \$10,000 to be divided by the SON districts in the US. for SON youth to attend heritage & culture camps. To be eligible to receive Draxten Fund assistance in District 2, the camper must be accepted by one of the three camps and be receiving a

Bazaar and Bake Sale a Huge Hit – Thank You!

The annual Bazaar, Bake Sale and Luncheon on Nov. 1 was a huge success. Just under \$7,500 was earned between vendor fees, mead tasting, lunch service and the bake sale. Funds help our lodge for events and services.

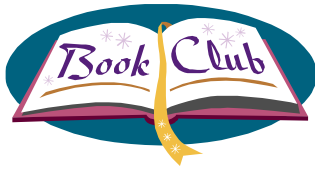
Bake sale chairperson Laurie Beach said, “I would like to send a huge thank you to everyone who took the time to donate baked goods, packaged the baked goods, helped at the bake sale and purchased the baked goods. Once again, Bothell Lodge came through. Enjoy your sweet holidays!”

In addition, the lodge garage sale crew collected more than \$2,000 from selling used items donated for the bazaar rummage sale table. Those funds will help purchase new picnic tables to use for lodge functions. The crew would like to thank all the people who helped to get ready, volunteered at the event and to the many members who donated items for the sale.



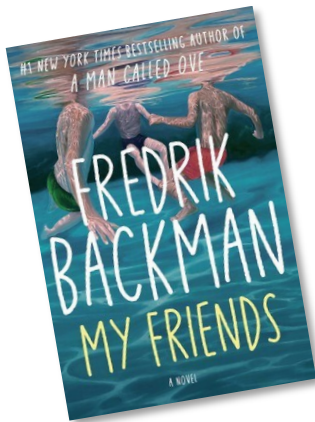
Don Melrose (left) and Bill Hicks fry smultringer for the Bake Sale table.

Lese Gruppe Meets Nov. 13



Lese Gruppe's next meeting will be on Thursday, Dec. 11, at 10:30 a.m. at the Bothell SON Lodge. All are welcome!

At our November meeting, we discussed "My Friends." The New York Times bestselling author Fredrik Backman crafted a tale of four teenagers whose friendship creates a bond so powerful that it changes a complete stranger's life twenty-five years later.



Most people don't even notice them — three tiny figures sitting at the end of a long pier in the corner of one of the most famous paintings in the world. Many believe it's just a depiction of the sea. But Louisa, an aspiring artist herself, knows otherwise,

and she is determined to find out the story of these three enigmatic figures. Along the way, she learns about friendship, love, grief and healing.

Our reading selections for the coming months:

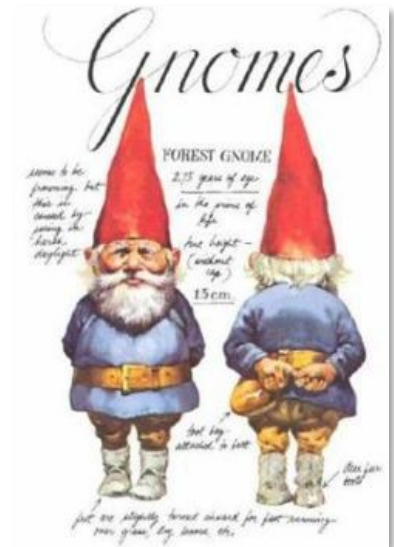
- * **December 11:** "The Christmas Train," by David Baldacci.
- * **January 8, 2026:** "The Writer," by D.W. Ulsterman.
- * **February 12, 2026:** "The Frozen River," by Ariel Larahon.
- * **March 12, 2026:** "The Other Einstein," by Marie Benedict.
- * **April 8, 2026:** "The Summer Book," by Tove Jansson.

You don't need to read the book to join Lese Gruppe. Contact Myrna Ramstad at (206) 365-6913 for information.

Library Corner by Marlis Pehling, Librarian

We have a wonderful addition to our library called Gnomes.

Originating from European myths and folklore, Gnomes look like small humans with red, peaked hats. They work by night in the woods and sometimes in human dwellings. In rural areas they lived in barns and kept an eye on livestock.



In earlier times they were seen regularly and rewarded or punished people. Now, they mostly keep out of sight. This book covers all aspects of gnome life, including food, and has wonderful and charming pictures. It also describes their relationships with other animals in the forests and barns.

Norwegian gnomes are called "nisse" and live in barns or homes to protect the farm/home and its animals. Nisse are mischievous, small, sport a long white beard, and typically wear a red conical cap and a gray jacket and pants. Often associated with the holiday season, one must leave a bowl of porridge with butter for the "nisse" on Christmas Eve to ensure good luck and protection.

If you want a fun, attractive book to read this holiday season, check out Gnomes. It is a good one. Happy reading!

To check out resources from the lodge library, please sign the logbook in the Fireside Room.

Tom & Jerry Party 2025

Holidays are just around the corner and you deserve a relaxing night out! Come and join us on **Friday December 19** at 7p.m. for an adult (21+) Tom & Jerry Party.

Hosted in the Bothell Lodge Main Hall, a cozy fire will be burning on the big screen and Scandinavian music will play. Homemade Tom and Jerrys and Hot Buttered Rums will be served along with appetizers. Feel free to bring something to share. Wear your favorite holiday sweater/shirt.

Come and enjoy the holidays and each other's company at Bothell Lodge.
A suggested donation of \$5 per person to help cover the cost.

Please RSVP if attending at dinner@bothellsonsofnorway.org
or leave a message at 425-485-9085.



Sports Update by Sports Director Shaun Bornemeier

January Lodge-Sponsored Event

I am excited to offer group seating tickets to see the Everett Silver Tips hockey game. **You will need to reserve your seat(s) with me by Monday, Dec. 15.** See e-mail below. Group ticket price is discounted 50% and only \$20 per person. Details are below:



Event: Everett Silvertips vs Wenatchee Wild.

Date/Time: Saturday January 3, 2026. Game starts at 6:05 p.m.

Location: Angel of the Winds Arena in Everett.

Cost: \$20 per person, sitting in green lower-level seats.

Deadline for reservation(s): Monday, Dec. 15.

Web link for more information: [Everett Silvertips](http://EverettSilvertips.com)



Shaun Bornemeier contact details:

Email: bornemeiers@yahoo.com

Phone: 425-765-5185



Nordic Christmas Concert Dec. 9

On Tuesday, Dec. 9, The Swedish Club hosts a free holiday concert of the rich choral traditions of the Nordic countries and their neighbors. Performing are Finnish Choral Society, Mägi Ensemble, Norwegian Ladies Chorus, Seattle Latvian Choir, Seattle Mannskor and Swedish Singers of Seattle. The 3 Crowns Lounge will be open as well to enjoy a warm glass of Swedish glögg.



Held at The Swedish Club, 1920 Dexter Avenue North, Seattle. Lounge opens at 5 p.m. and concert begins at 7 p.m. To RSVP, visit www.swedishclubnw.org.

Sunshine Report

A birthday cards was sent to Oddvar Helgesen, who turned 92 on Nov. 11. "Gratulerer med dagen!"

Thinking of you cards were mailed to David Hagan and Art Nelson.

A sympathy card was to sent Renee Lund on the loss of her mother. Our condolences.

Please let Mary Anne Rehbock know if someone could use a card of encouragement, congratulations or condolences. She is available at (206) 498-3271 or email her at marehbock@aol.com.



It's Time for the Raffle for the Ray Berg Scholarship Fund

Don't miss out on a chance to win a tasty Scandinavian goodie or a beautiful rosemaling painted milk can. To raise charity funds for the Ray Berg Scholarship Fund, \$5 raffle tickets for either prize go on sale at the Bazaar and Bake Sale Nov. 1. Sales continue at lodge events through Heritage Day in early March.

Created in memory of the fourth president of the Bothell Lodge, the Ray Berg Fund provides a scholarship to young adults for studies after high school. Applicants must be a member, or child, grandchild, niece or nephew of a Bothell SON member.



Raffle tickets are only \$5 each and available at lodge events.

Gift Basket includes:

- * \$25 Scandinavian Specialties gift card.
- * \$20 Hillcrest Bakery gift card.
- * \$25 Starbucks card.
- * 2026 Norway calendar.
- * Scandikitchen Hygge book.
- * Jar of lingonberries.
- * 2 mugs.
- * Various snacks and m-
Mentos.

Two winners will be chosen next March. The first winner may pick one of the two prizes. The second winner will get the other prize. It's not necessary to be present at the winner drawing at Heritage Day.

Help Still Needed at Lutefisk and Meatball Dinner

Event is Waitlisted But Helping Can Get You Dinner at a Discount or Free

This Saturday, Dec. 6, Bothell Lodge will host its annual Lutefisk and Meatball Dinner. This annual event is one of the major undertakings by Bothell SON Lodge and raises important funds for the coming year.

Dec. 6, Saturday, 10:00 a.m.

There are many different needs to fill, especially for table clearers from 12 noon to 4 p.m. and dish washers from 3:30 to 8 p.m.



Volunteers who work one shift receive dinner at half cost. Volunteers who work two shifts receive a complimentary meal.

To volunteer, please contact the "Leader of the Fish," Chris Hicks, by e-mail at ChrisD2SofN@outlook.com or call 425-672-0194. She is looking for a school of helpers.

Traditional holiday lutefisk dinner. Photo : Fredrik Ahlsen - Visit Norway.



Lots of hands are needed to prepare lutefisk dinner. Photo: Finnish Heritage Agency/Wikimedia.

The event is already sold out and waitlisted for five seatings so we will be very busy and require lots of help. Please consider helping out.

Later this week, we have a schedule of social work events and volunteer opportunities for members to consider.

Dec. 4, Thursday, 9 a.m.

Begin rolling meatballs until completed. This usually takes 3-4 hours depending on group size. Come and go as you please.

Dec. 5, Friday, 9 a.m.

Peel potatoes and set up tables and buffet.

Christmas in Norway Fabulous Facts

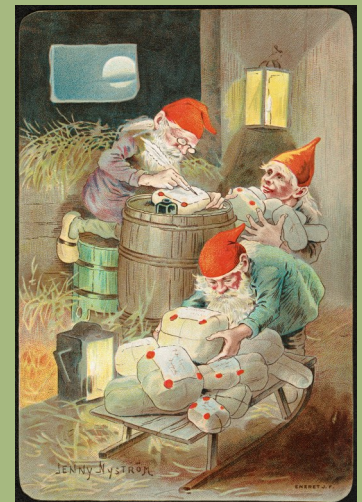


Carolers sing in front of the Christmas tree from Oslo lit up in Trafalgar Square. Photo: Diliff/Wikimedia.

* Each year, Trafalgar Square in London features a massive Christmas tree that is a present from Norway. Oslo has been sending a tree to England every year since 1947 as a thank you for British support during World War II.

* Find the almond! This is a game where the family eats rice porridge on Christmas Eve. There is one whole almond hidden in the porridge, and whoever gets it is the proud recipient of a pig made of delicious marzipan.

- * The “julenisse” is Norway’s elusive Christmas gnome, who sports a white beard and a red cap. Historically the julenisse has been known to help lighten the farmer’s chores and keep the farm safe. Nowadays, the nisse brings gifts to well-behaved Norwegian children. Keep him happy by leaving out a generous bowl of porridge!
- * Everyone eats well during “juletiden,” or Christmastime, even the birds. It’s common to see sheaves of wheat or oats that have been placed in the trees for the birds to feast on.



“Julenisser” painted by artist Jenny Nyström. Photo: Natinoal Library of Norway/Wikimedia.

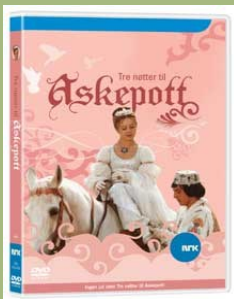


Photo: Wikimedia.

* “Tre nøtter til Askepott” (“Three Wishes for Cinderella”), a reminagined Cinderella tale, has been a Christmas TV tradition since the 1990s. Strangely enough, this is a Czech version of the classic story, dubbed into Norwegian by a single actor. Watching it is so popular that it airs every year on NRK, Norway’s national broadcasting channel. To see the trailer from a 2021 Norwegian remake, click here: <https://www.youtube.com/watch?v=a-YViUsGqo>.



Interviews, folktales,
music, and hygge.

Listen on the internet at
nordicontap.com
Anytime. Any hour.

With host, Eric Stavney
and cool people like you

Save Stamps

Bring your canceled
stamps to the lodge
to drop off in the
lobby. Cut leaving
one-half of an inch
around the stamp
to preserve edges.



Winners at November Lodge Dinner

Membership Drawing

Names drawn for \$20: Daniel Berg was
not present. Mike Nelson won \$20 and
donated it to Hopelink — thank you!
Next month is back to \$5. Must be pre-
sent to win.

50/50 Drawing for Scholarship Fund

Not held.

The Scandinavian Hour

with your host
Seth Tufteland



Saturday & Sunday 6:00-7:00am, Saturday 9:00-10am

Stream us online at <https://1150kknw.com/listen-online>

Visit our website at www.thescandinavianhour.org

Music, News, & Interviews for the Scandinavian Community

Norwegians Are Coming to World Cup 2026



The Norwegian men's soccer team won its European qualifying group and a guaranteed place in the 2006 World Cup to be held in the United States, Mexico and Canada next summer. Norway stated its case by beating every team in its group twice with 37 goals scored and only 5 against them. Star forward Erling Braut Haaland, who also plays for Manchester City F.C. in the United Kingdom Premier League, scored the most goals in qualifying with

16 total. On December 5 it will be decided where teams play their early games. Seattle is a host city so could see the Norwegians coming.



Striker Erling Braut Haaland.
Photo: Michael Emilio/Wikimedia.



Sons of Norway
Bothell Lodge 2-106

Stamp
goes
here

PO Box 492
Bothell, WA 98041
Street Address:
23905 Bothell-Everett Highway

bothellsonsofnorway.org



Label goes here :)

UPCOMING EVENTS

(All events at Bothell Lodge unless indicated otherwise.)

December 1 - Monday - Vikings! - 6:30 p.m.

December 2-5 - Tuesday through Friday - Helping with Lutefisk Dinner at lodge. - 9:00 a.m. daily.

December 4 - Thursday - Board Meeting - 7:00 p.m.

December 6 - Saturday - Lutefisk and Meatball Dinner - 11:15 a.m. to 7:00 p.m.

December 10 - Wednesday - Fiber Arts - 7:00 p.m.

December 11 - Thursday - Lese Gruppe - 10:30 a.m. - In Fireside Room.

December 14 - Sunday - Family Christmas Party (St. Lucia program) - 1 to 4 p.m.

December 24 - Wednesday - Christmas Eve

December 25 - Thursday - Christmas

December 31 - Wednesday - New Year's Eve

January 1 - Thursday - New Year's Day

January 5 - Monday - Vikings! - 6:30 p.m.

January 8 - Thursday - Board Meeting - 7:00 p.m.

January 6 - Tuesday - Epiphany

January 7 - Wednesday - Fiber Arts - 7:00 p.m.

January 8 - Thursday - Lese Gruppe - 10:30 a.m. - In Fireside Room.

January 15 - Thursday - Lodge Night - 5:30 p.m. Music; 6:00 p.m. Social; 6:30 p.m. Dinner; 7:30 p.m. Meeting

January 16 - Friday - Winter Bunco - 6:30 p.m.